



ARES FML-0100

Small and economical hammer grinding mill for milling small quantities of product for laboratory testing.

Designed for the milling of a great variety of solid, soft or semi-hard, as cereals, spices, seeds, land, etc.

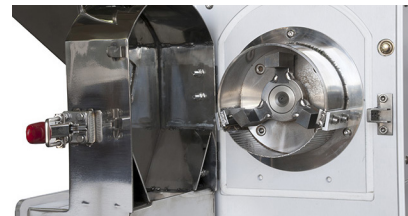
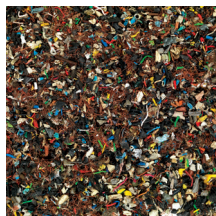
Feeding is via vertical input which allow products with an particle size of + or - 15 mm.

Quick release door with safety micro-sensor which is activated when the rotor and blades are in operation.

It comprises of three long-lasting blades manufactured from stainless steel and an interchangeable screen with round perforations from 1 to 5 mm of diameter.

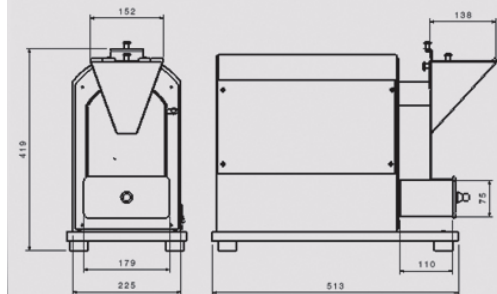
Frontal and loading hopper manufactured from mirror-polished AISI-304 stainless steel.

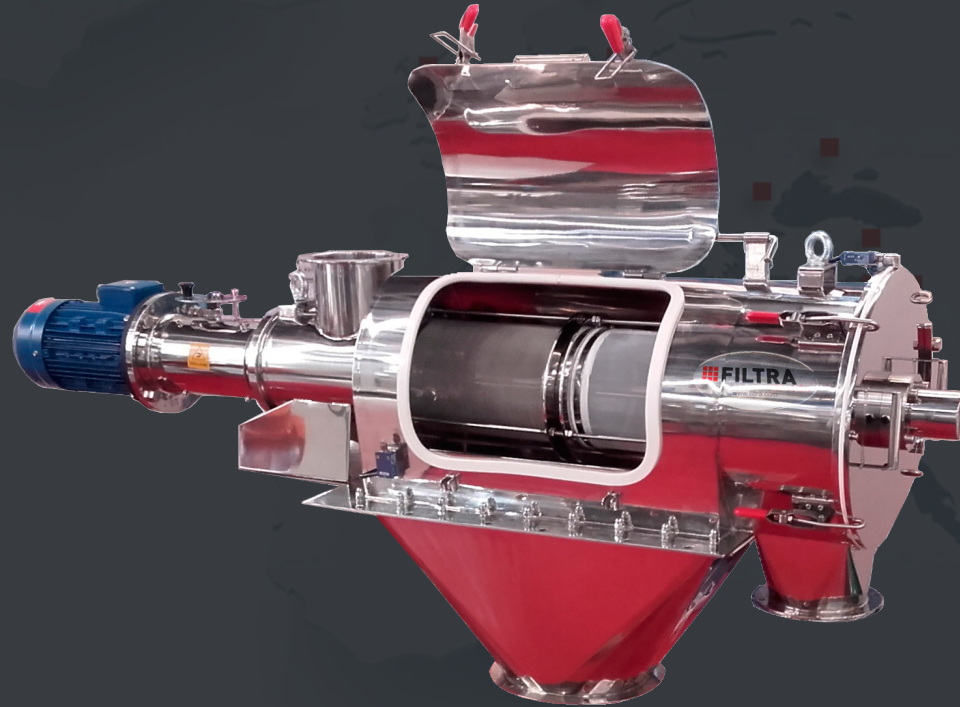
- INCLUDES:**
- Hammer grinding mill
 - Connecting cable
 - Tray of methacrylate
 - User manual
 - CE declaration of conformity



TECHNICAL FEATURES

- Speed: 3000 rpm
- Grinding chamber volume: 0.4 l
- Collector capacity: 1l
- Sieve sizes (ø mm): 1, 2, 3, 4, 5.
- Maximum particle feed size: 15 mm.
- Voltage: 220/240 V - 50/60 Hz.
- Power: 1.1 kW.
- Weight: 38 kg.





SIEVING FOR LABORATORY AND INDUSTRIAL PROCESSES

FILTRA
VIBRACIÓN

Filtra Vibración S.L

C/ BRONZE, 1-3, P.I. LES GUIXERES
08915 BADALONA (BARCELONA)

filtra@filtra.com
filtra.com